

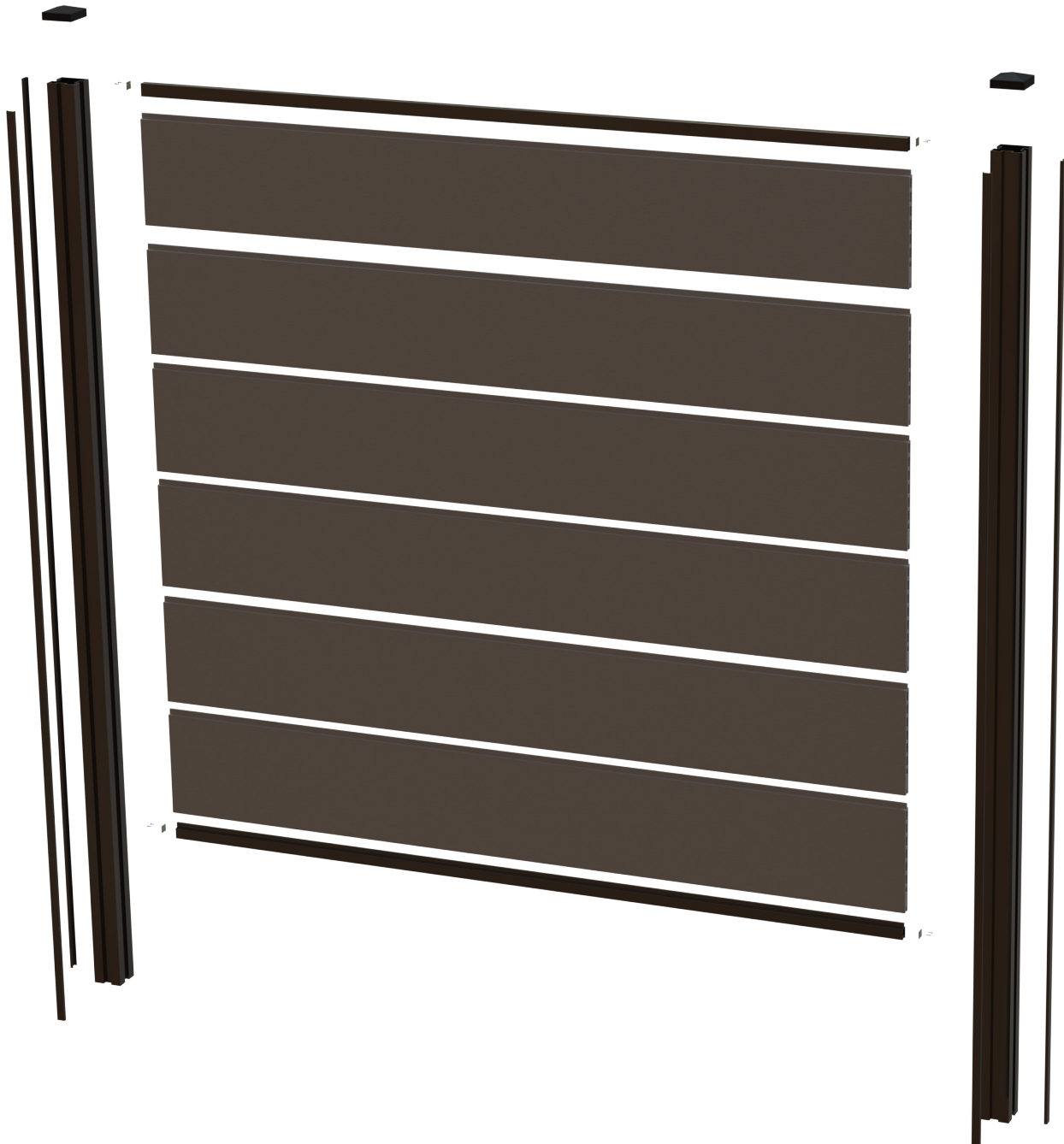


ECOMPOSITE

PRODUCTS

ULTIMATE COMPOSITE FENCE

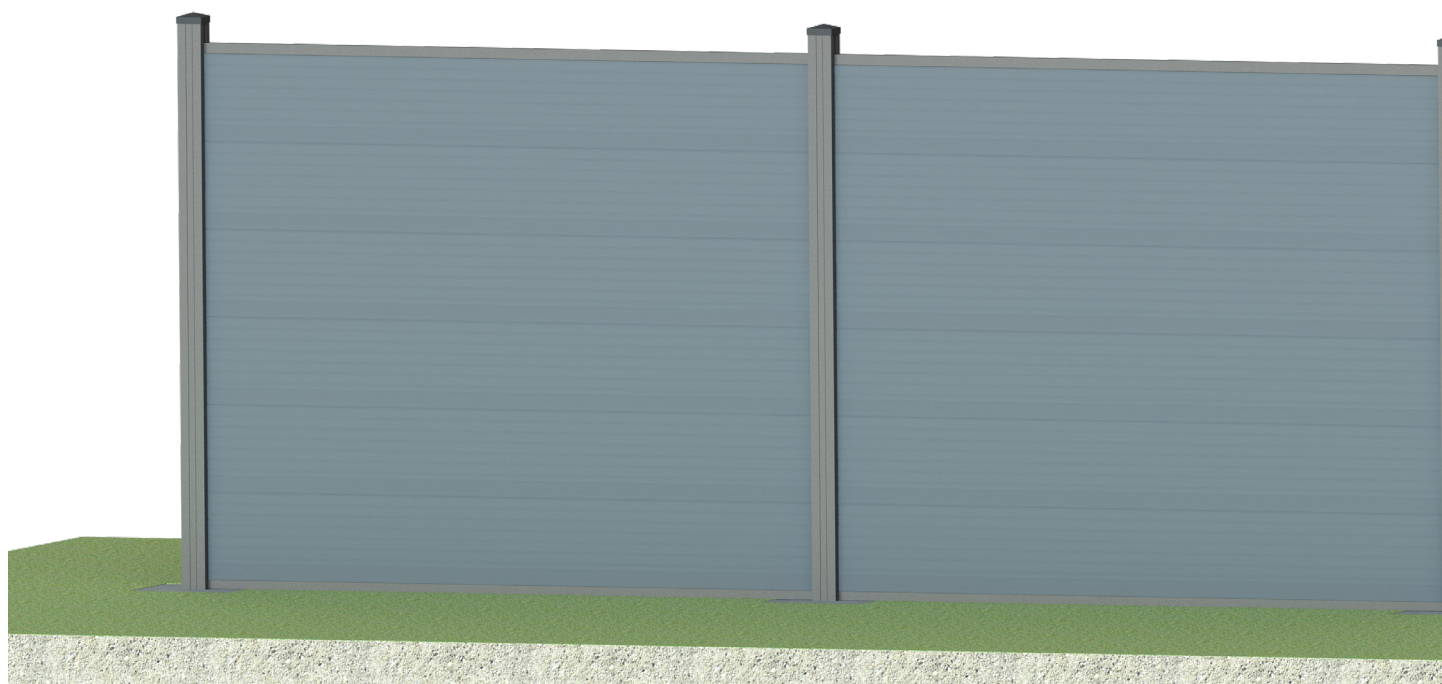
Installation Manual



English

INTRODUCTION

Introducing the Ultimate Range assembly manual. In this manual, we will show you how to assemble your own Ultimate Range. Before beginning the assembly, make sure that there is ample room for installing and assembling your product.

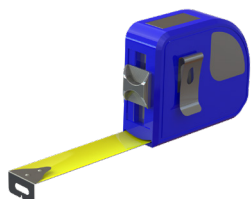


For Installation Help or Information Contact Us At:

2 www.ecompositeproducts.co.uk info@ecompositeproducts.co.uk 0800 599 9667

PARTS & TOOLS CHECK LIST

Ensure that the following parts are included with your assembly. These are crucial components that will be the mainframe of your entire assembly.



Tape Measure



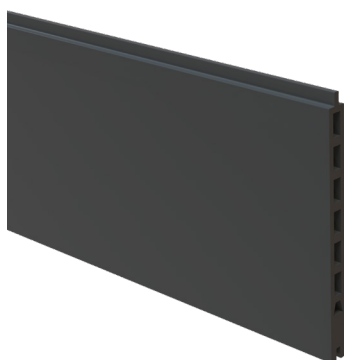
Spirit Level



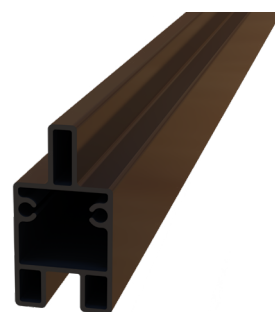
Rubber Mallet



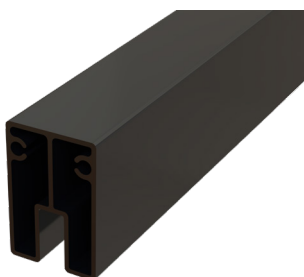
Shovel



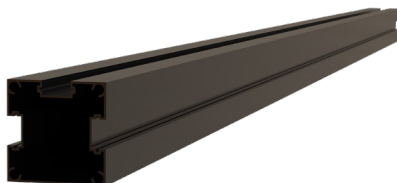
Part A Composite Boards
QTY: 6 (Color of your choice)



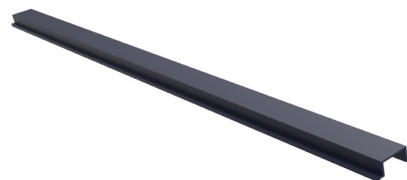
Part B Bottom Rail
QTY: 1



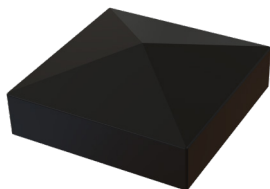
Part C Top Rail
QTY: 1



Part D Aluminum Post
QTY: 1



Part E Cover Strips
QTY: 1



Part F Post Cap
QTY: 1



Part H Stainless Steel Guide
QTY: 4



Part I Screws
QTY: 8



Phillips Screwdriver



For Installation Help or Information Contact Us At:

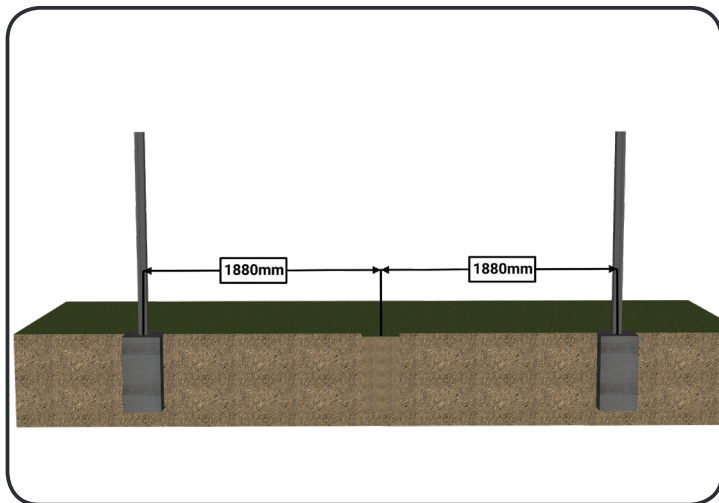
www.ecompositeproducts.co.uk

info@ecompositeproducts.co.uk

0800 599 9667

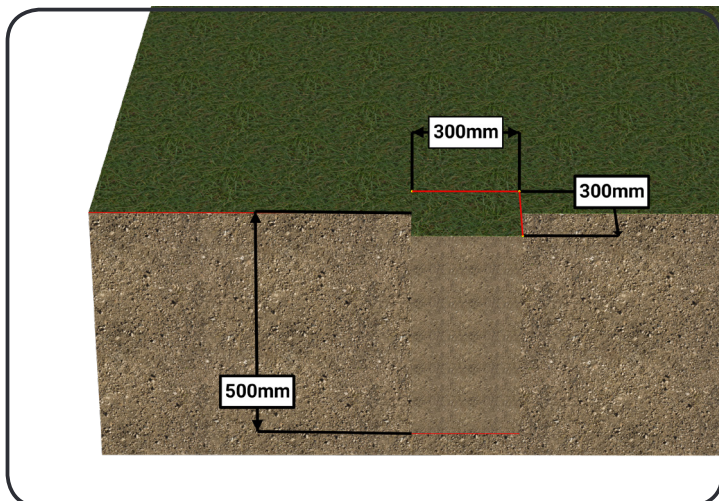
INSTRUCTIONS

Step 1 - Aluminum Post Installation



1. Place two posts into the desired location

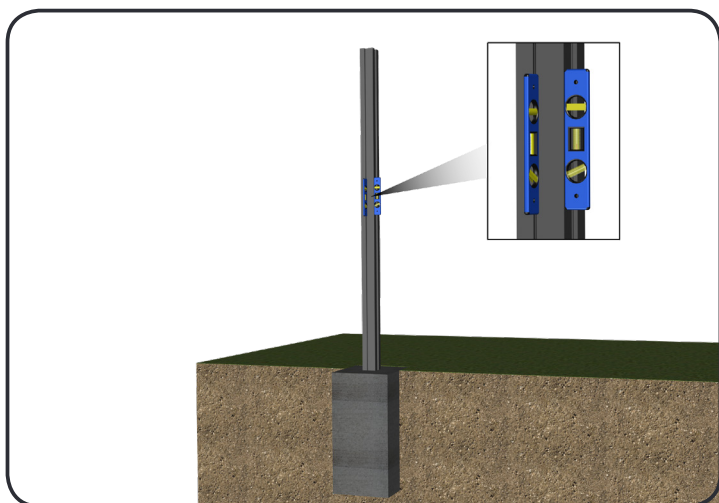
Begin step one by placing two Aluminum Posts, Part A, at a distance of 1880 millimeters from center to center



2. Mark the locations of the posts

Next, mark the location and use a shovel to dig two 300 by 500 millimeter deep holes. Insert both Aluminum Posts into the 500 millimeter deep holes and make sure both posts stand 1900 millimeters above ground level. At this stage you could slide top & bottom rails down each post to secure and accurately space them.

Refer to Step 2 to achieve this.

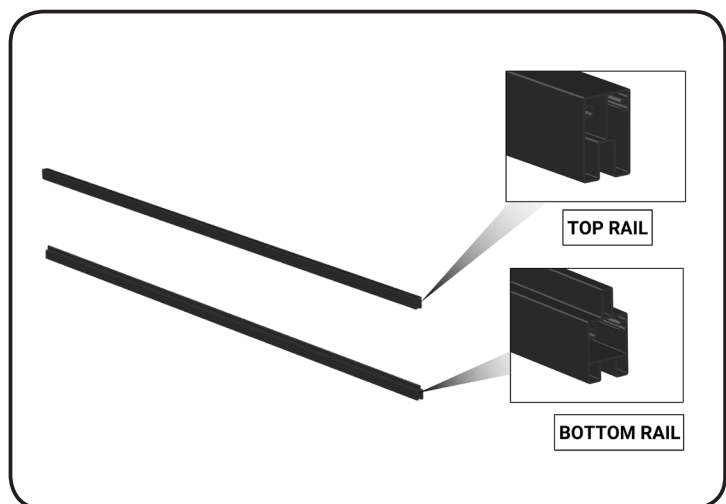


3. Fill the locations with concrete

Once the placement of the posts and the depth of the holes are verified, fill the holes with concrete and use a spirit level to ensure the posts are level front and side. Make sure both posts remain straight and parallel to one another.

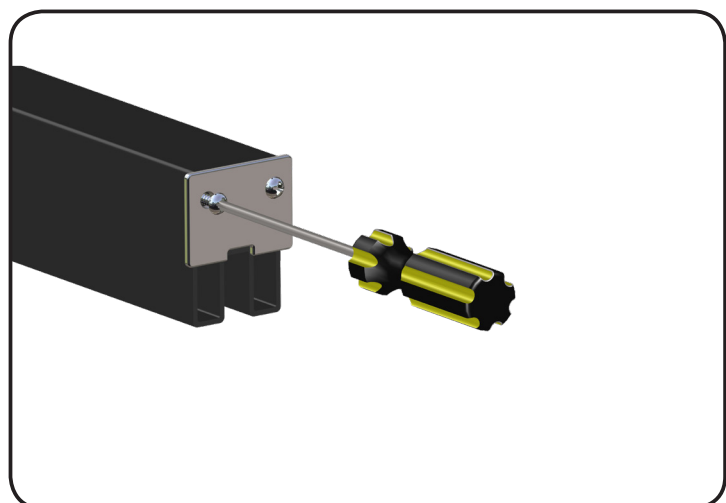
INSTRUCTIONS

Step 2 - Installation of the Top and Bottom Rails



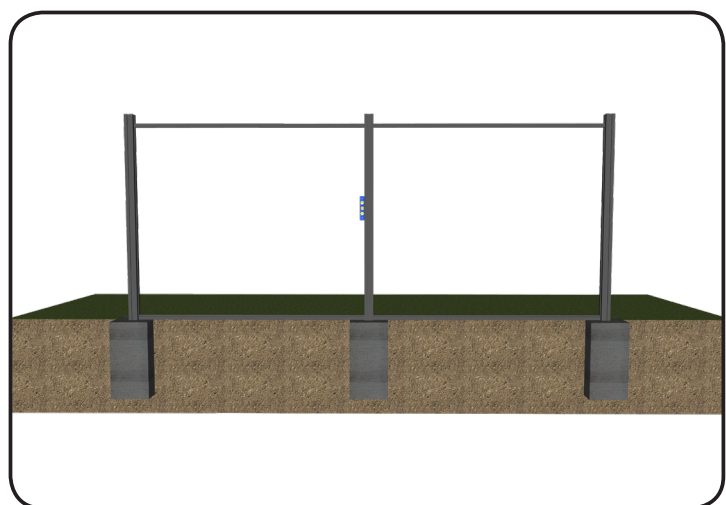
1. Insert the top and bottom rails

Begin Step Two by locating the Top and Bottom Rails, Parts B and C.



2. Attach the Part H and Part I Hardware

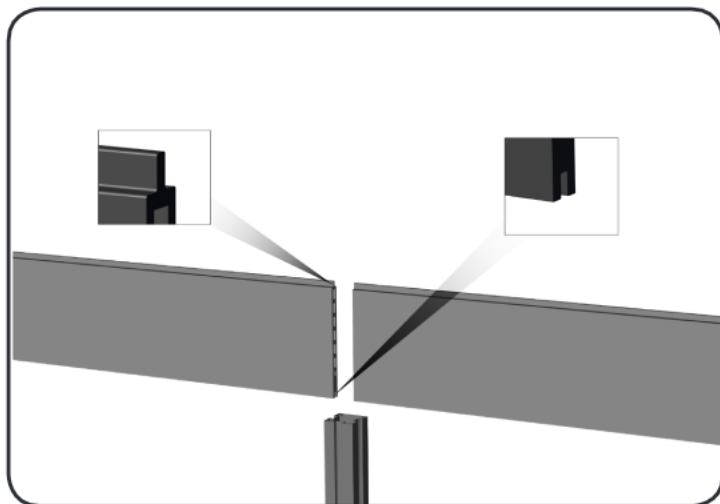
Next, secure four Part H and eight Part I pieces of hardware, one Part H and two Part I pieces on each ends of the rails. Tightly secure the hardware to the rails using a Phillips screwdriver. Take care not to over tighten the hardware



3. Make sure the rails are secured

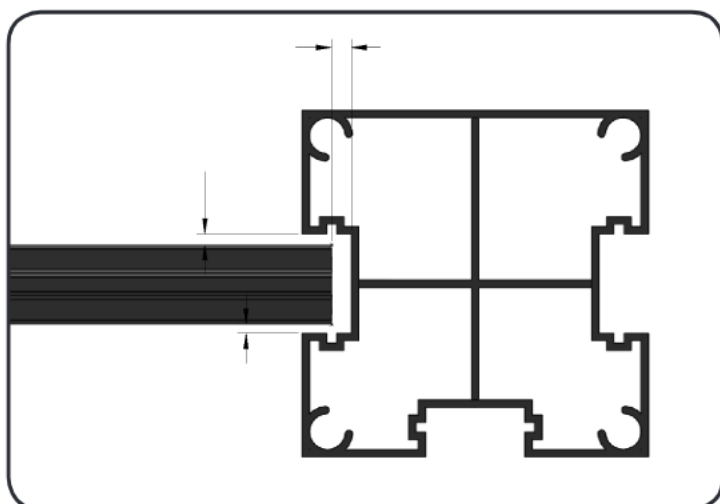
Slide the rails into place, and use a spirit level to ensure the posts are level front and side. Make sure all posts remain straight and parallel to one another.

Step 3 - Installing the Composite Boards and Top Rails



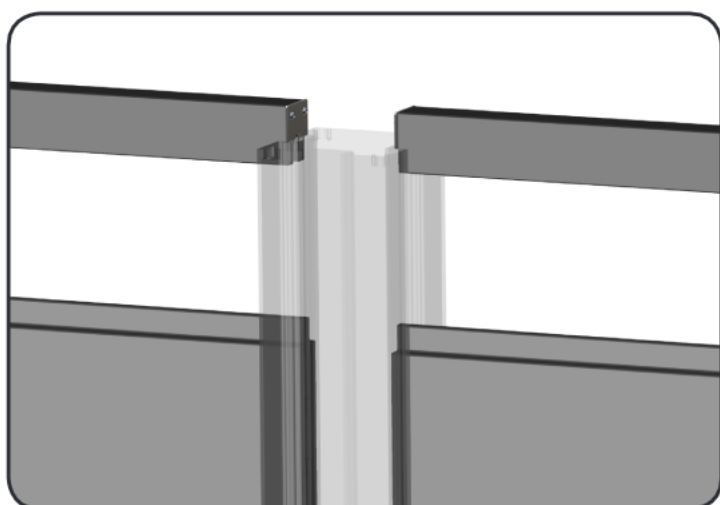
1. Line up the Composite Boards

Begin Step Three by removing the top rails and placing one Part A composite board between the two aluminum posts. The notched section of the panel goes face down while the extruded side goes face up. Slide the boards downward.



2. Check for proper spacing

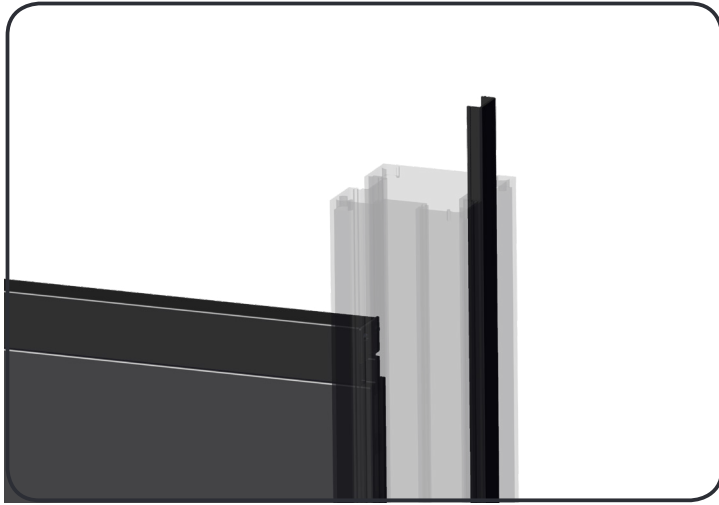
Before pushing the panel down, ensure that there is a gap of 5 to 6 millimeters worth from the sides, as shown. This has been created as Standard so you should not have to worry.



3. Repeat for remaining boards

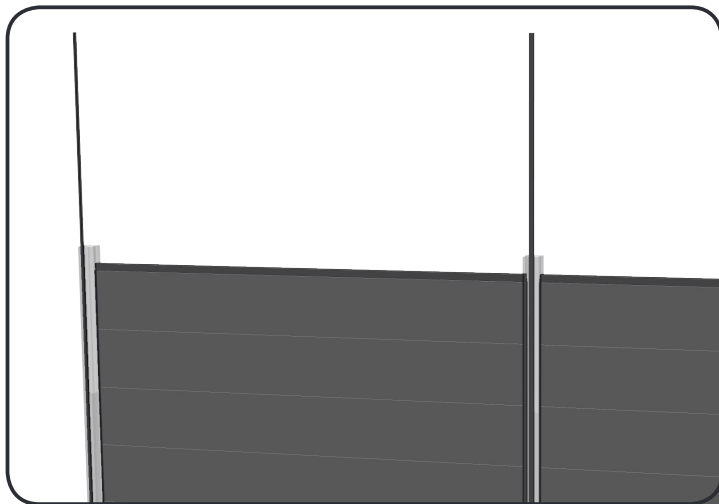
Repeat these steps for the remaining boards. Once all boards are properly placed into position, reattach the top rail and secure it above the topmost board.

Step 4 - Installing the Aluminum Guides



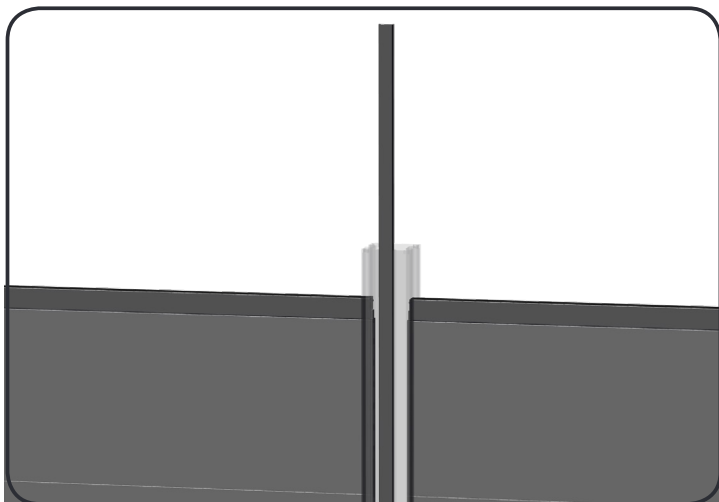
1. Installing cover strips in end posts

Begin step four by placing the cover strips, Part E, to the open section of the Part D posts of the leftmost and rightmost posts, as shown



2. Installing cover strips in mid posts

Slide the remaining cover strips into place, with the middle post having the cover strip slide through the front middle section of the middle post, shown below

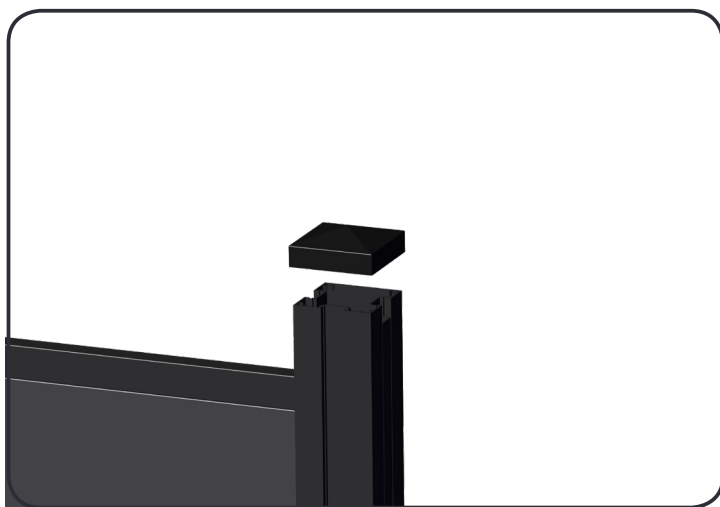


3. Slide the middle cover strip towards the front

The middle post will have the remaining cover strip placed towards the front instead of the sides, as the composite boards have been installed on both the left and right hand sides of the middle post. As with the other two cover strips, slide and secure into place.

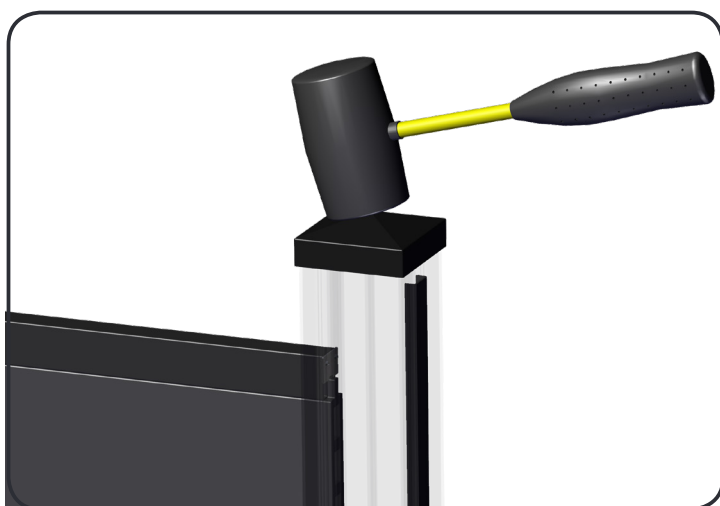
INSTRUCTIONS

Step 5 - Installing the Post Caps



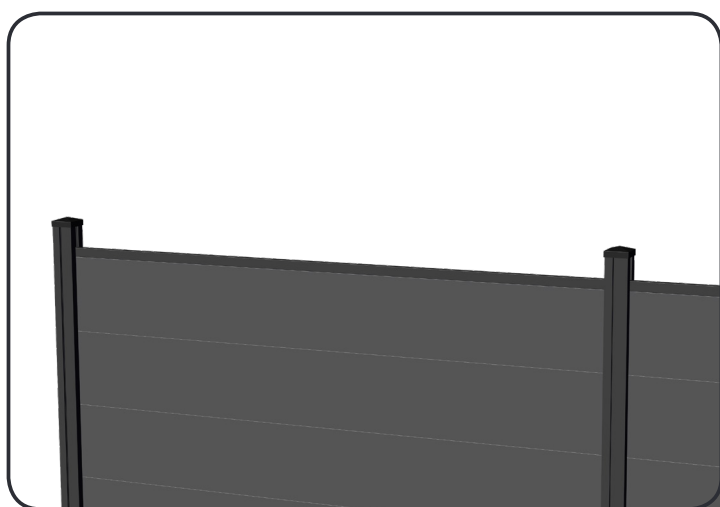
1. Place the caps above the posts

Begin step five by placing the Part F post caps directly above the posts and push into place, securing the guides, top rail, and composite boards.



2. Secure the caps

Secure the caps to the posts using a mallet to tighten the caps into place to prevent unwanted motion and misplacement of the parts attached to the post.

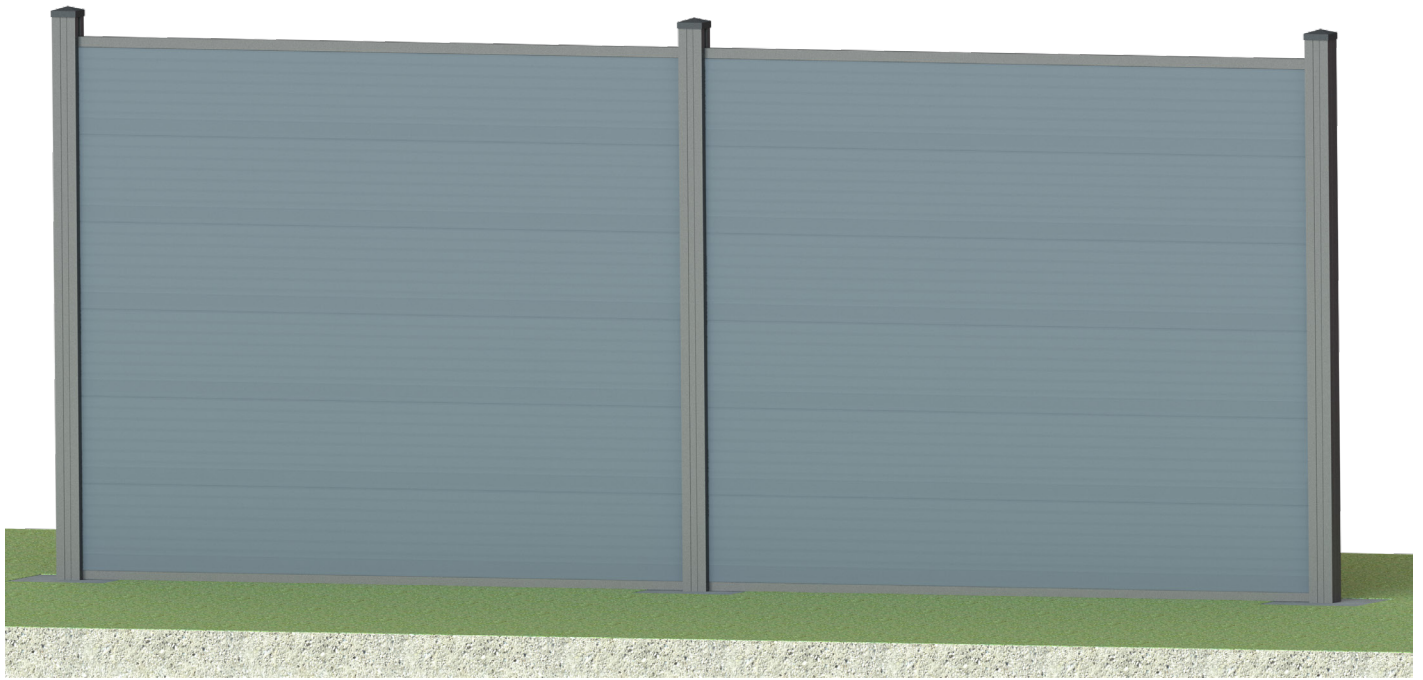


3. Repeat process for remaining caps

Secure the remaining caps on the remaining posts.

Congratulations, you have completed the assembly of the Ultimate Range!

Enjoy your new Ultimate Range!



For Installation Help or Information Contact Us At:

🖱 www.ecompositeproducts.co.uk ✉ info@ecompositeproducts.co.uk ☎ 0800 599 9667