

1. MARK POSITION OF POSTS

**GATE WIDTH
+ 30MM - 60MM**

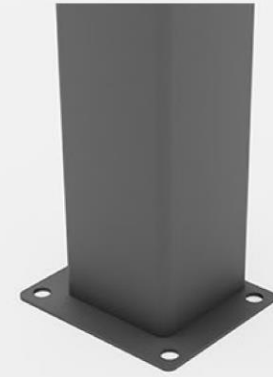


2. FLOOR OR CONCRETE MOUNT



**CONCRETE -
GO TO STEP 5**

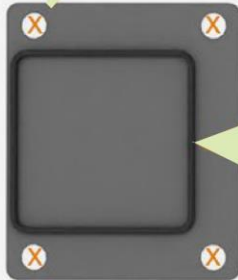
OR



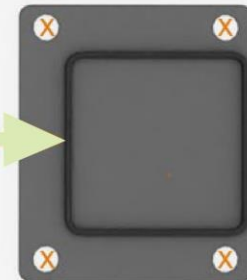
**FLOOR MOUNT -
GO TO STEP 3**

3. DRILL FLOOR BOLTS

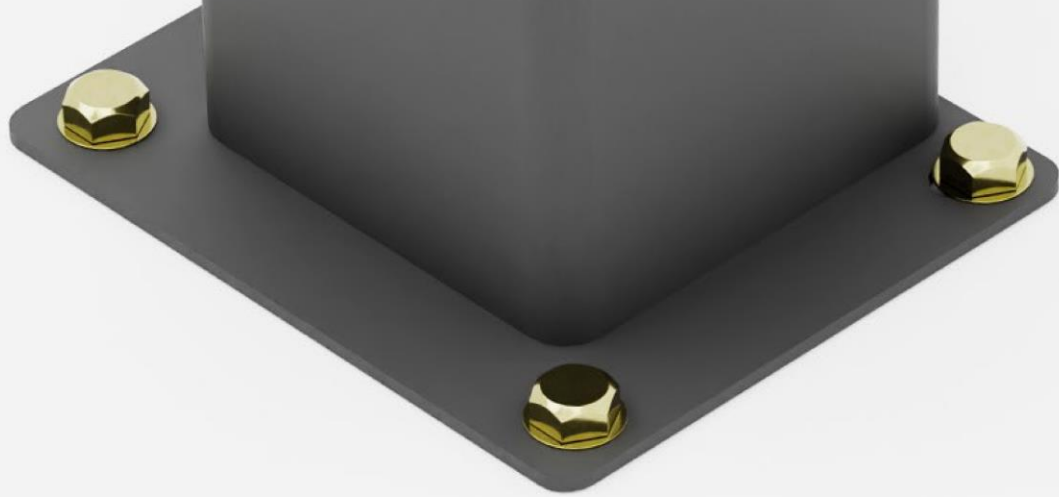
10MM DRILL - 8 PLACES



**GATE WIDTH
+ 30MM**



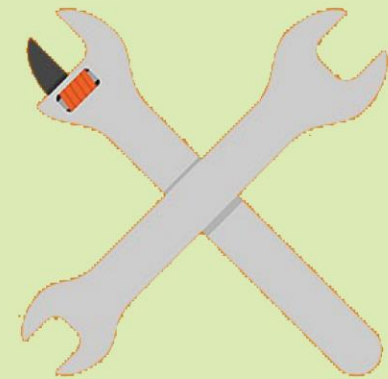
4. FIX TO FLOOR



GO TO STEP 8

NOTES

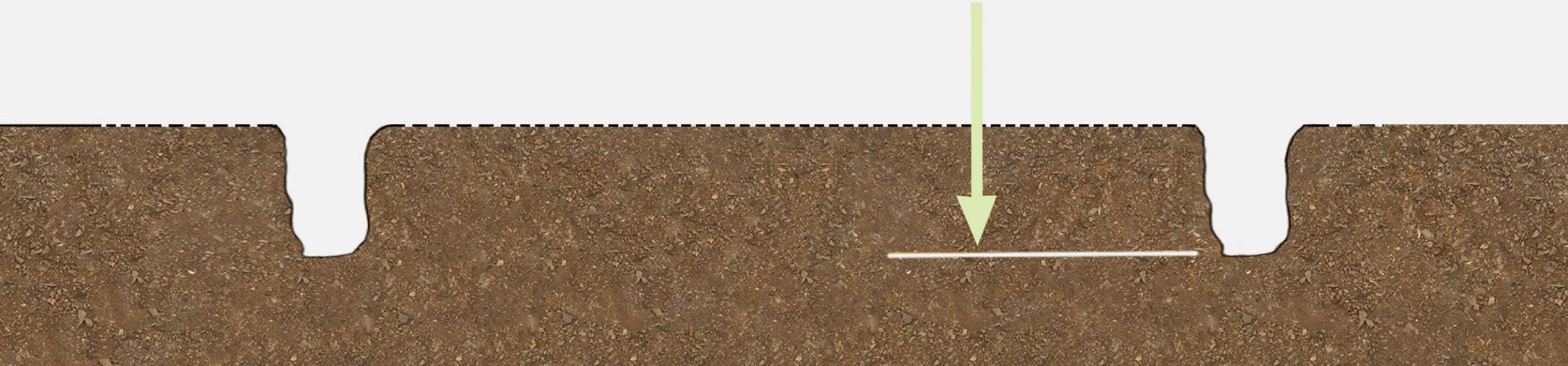
**M10 X 75MM BOLTS
8 X PLACES
WRENCH OR
SOCKET SET**



***FOR CONCRETE MOUNT ONLY**

5. DIG POST HOLES

**DIG 2 x POST HOLES
MINIMUM 500MM
BELOW GROUND LEVEL**



6. CUT 2 X POSTS TO LENGTH

**GATE HEIGHT
+ 100MM FROM
GROUND LEVEL**



7. CONCRETE POSTS

← SET WIDTH BETWEEN POSTS
GATE WIDTH + 30MM →

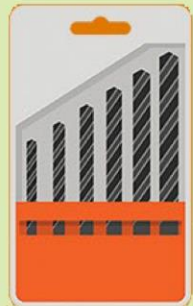
USE QUICKSET CONCRETE

ENSURE POSTS ARE
SQUARE IN BOTH AXIS



NOTES

**BRACKET TO POST
40MM MIN
60MM MAX
DRILL 2 X PLACES
10MM DRILL**



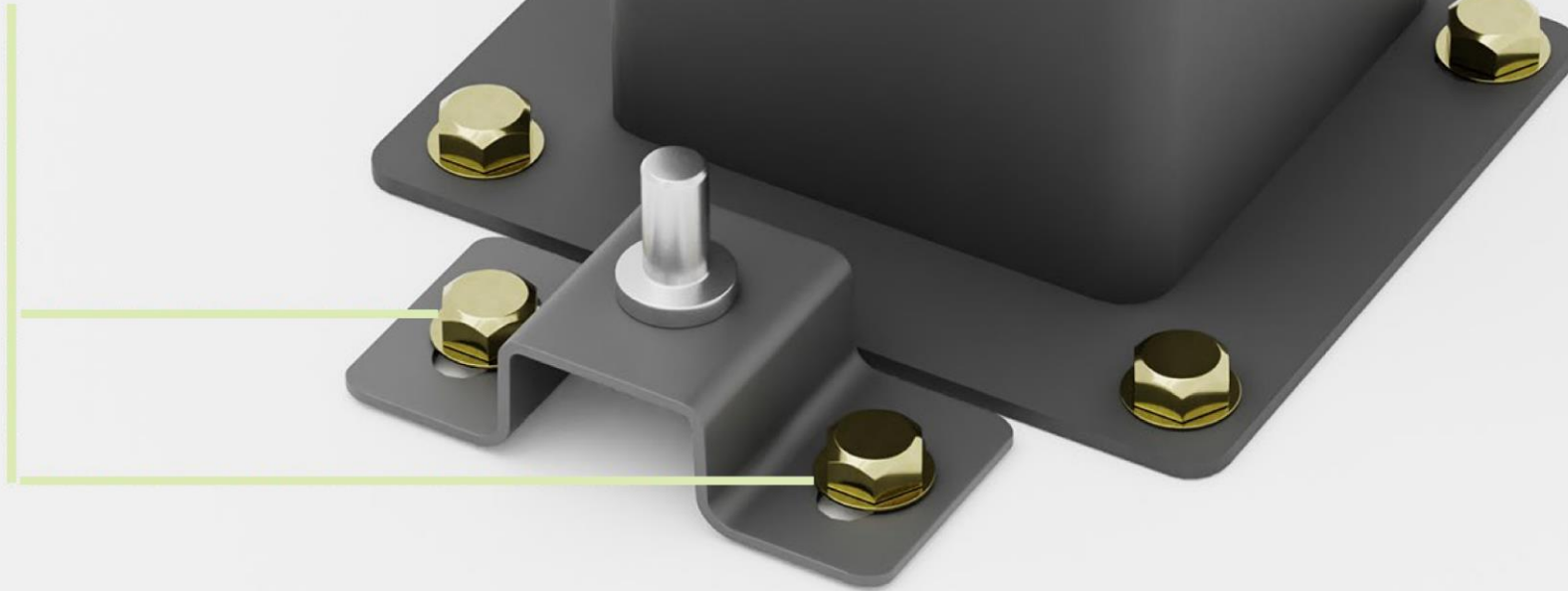
8. FLOOR SPIGGOT





9. PRE-ASSEMBLE LOWER SPIGGOT

**M10 BOLTS
2 x PLACES**



10. FIX LOWER HINGE TO FLOOR

11. ASSEMBLE UPPER SPIGGOT



NOTES

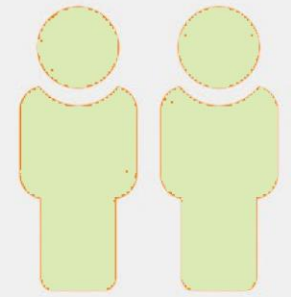
OPPOSITE TO LOWER BRACKET

12. LOAD GATE - HOLD SQUARE



NOTES

- HOLD GATE SQUARE
- LOAD UPPER HINGE
- MARK 2 X PLACES



13. MARK UPPER HINGE POSITION

NOTES

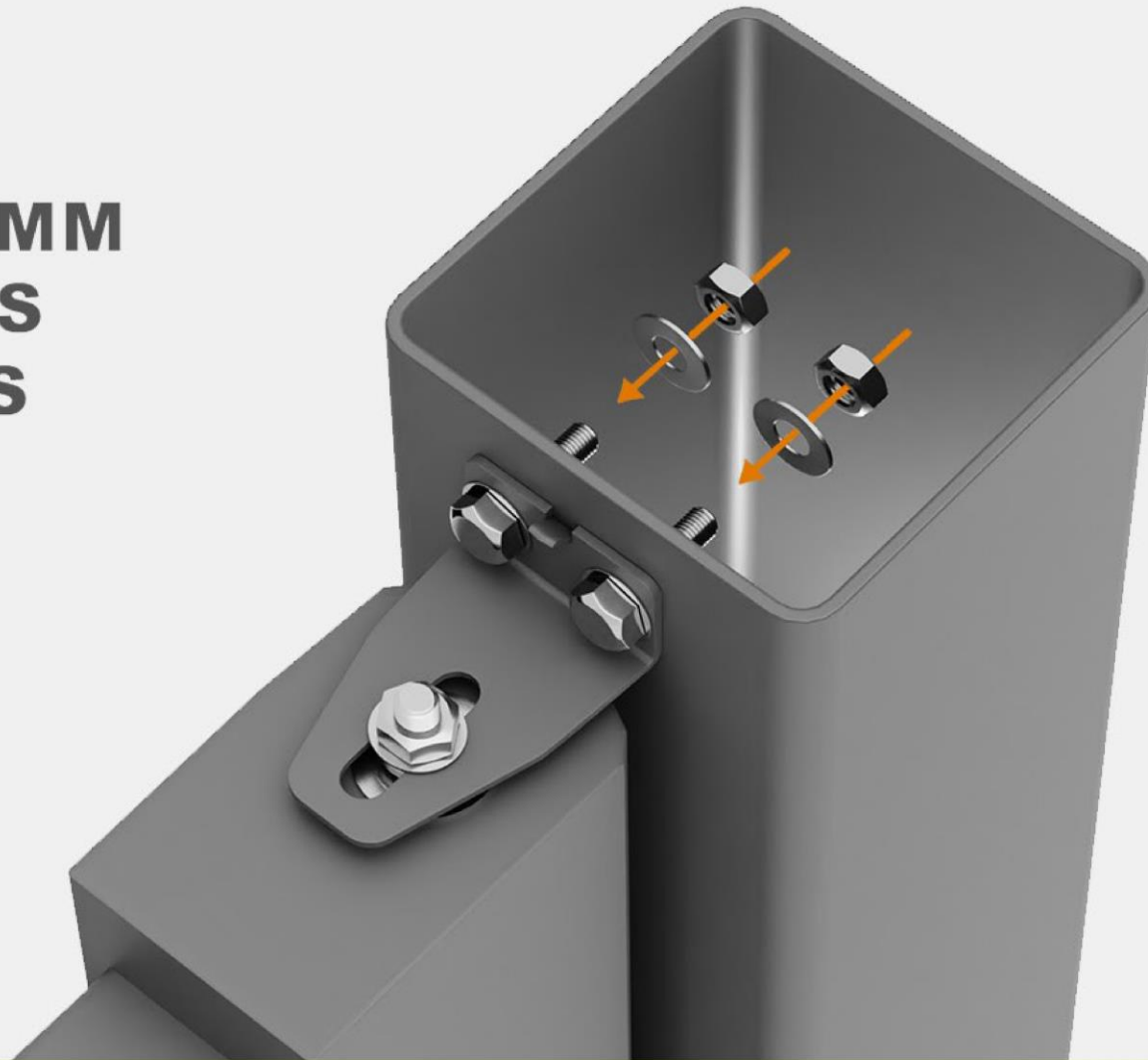
DRILL 2 X PLACES
12MM DRILL



13. DRILL POST

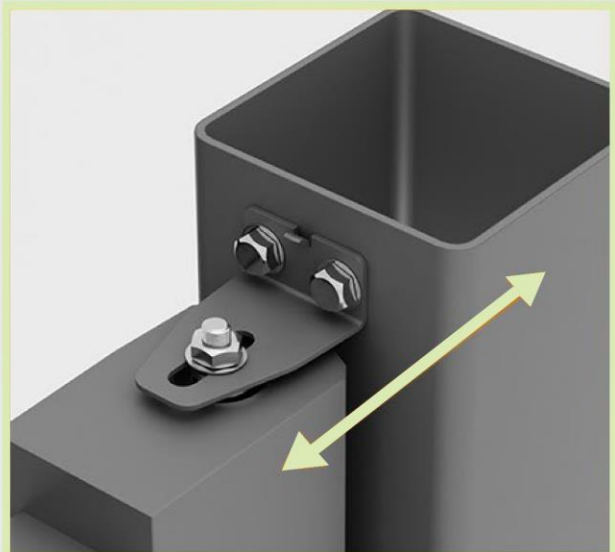
NOTES

- 2 x M12 x 35MM
- 2 x M12 NUTS
- 4 x WASHERS



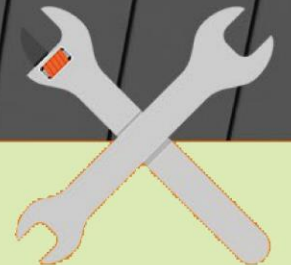
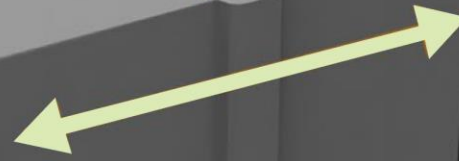
14. FIX UPPER HINGE

**REPEAT
STEP 8 TO 15
FOR LH GATE**

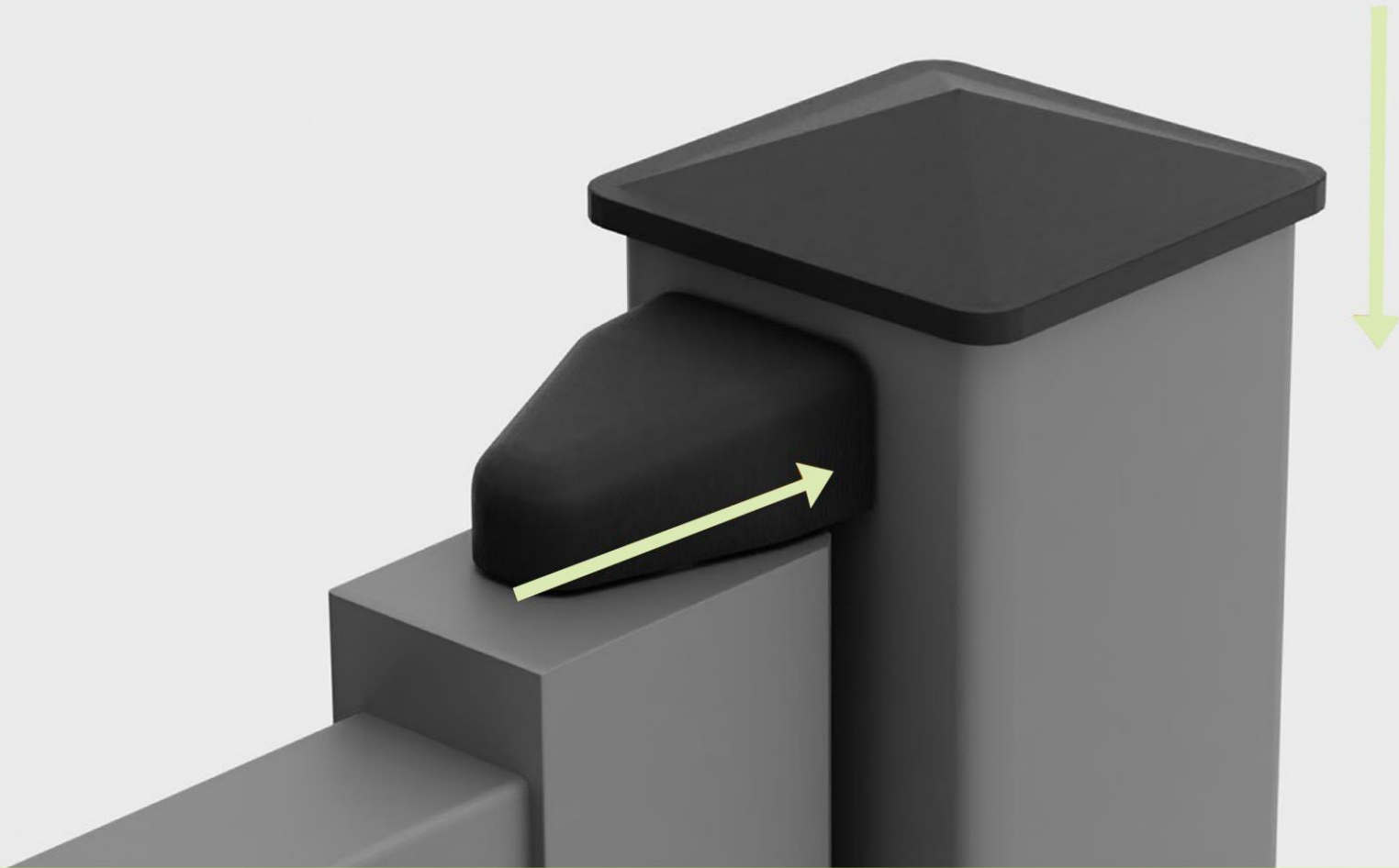


2 X PLACES

10MM GAP



17. ADJUST UPPER HINGES



18. FIT COVERS - 4 X PLACES

PROJECT COMPLETE

