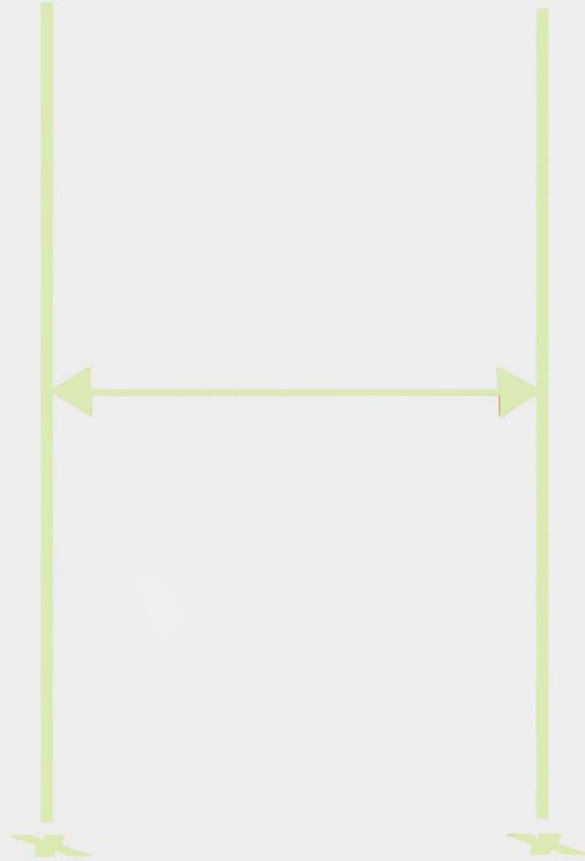


## 1: MARK APPROX POSITION OF POSTS



## NOTES

**GATE WIDTH + 30MM**

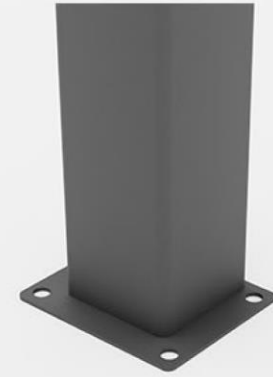


## 2. FLOOR OR CONCRETE MOUNT



**CONCRETE -  
GO TO STEP 5**

**OR**



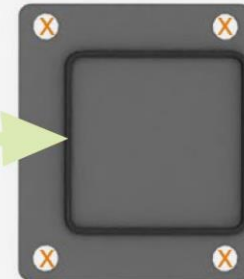
**FLOOR MOUNT -  
GO TO STEP 3**

# 3. DRILL FLOOR BOLTS

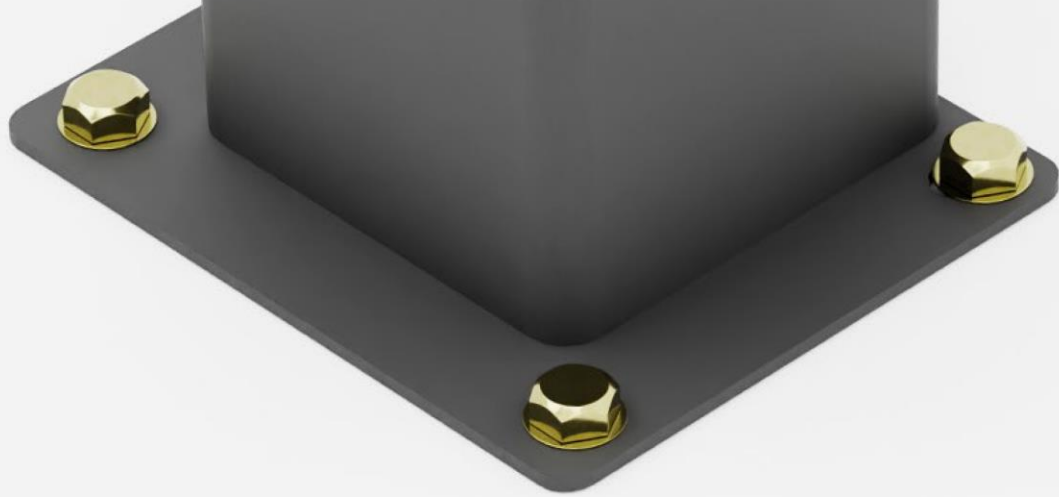
10MM DRILL - 8 PLACES



**GATE WIDTH  
+ 30MM**



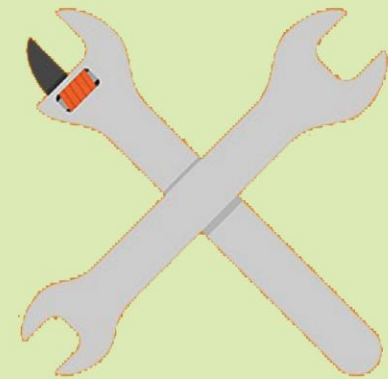
## 4. FIX TO FLOOR



**GO TO STEP 8**

## NOTES

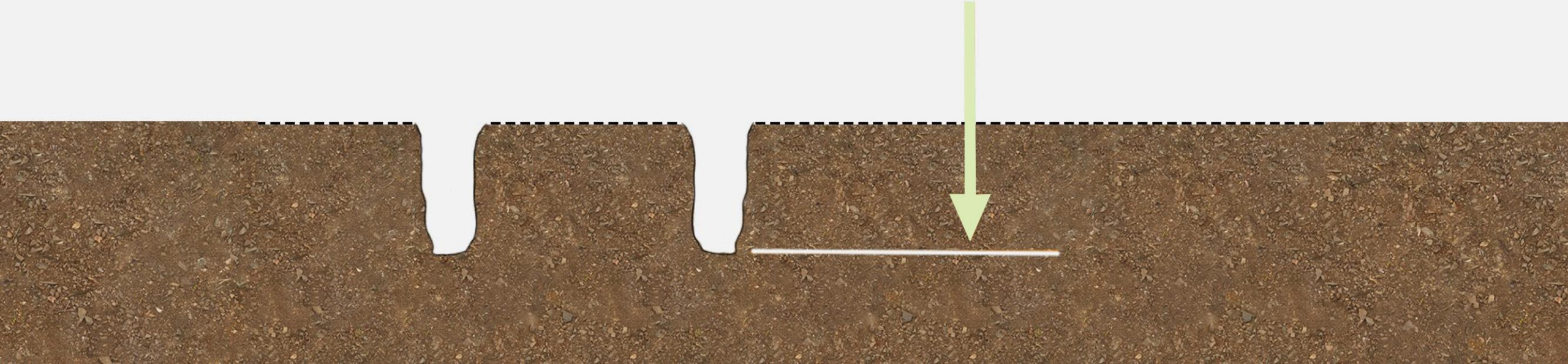
**M10 X 75MM BOLTS  
8 X PLACES  
WRENCH OR  
SOCKET SET**



**\*FOR CONCRETE MOUNT ONLY**

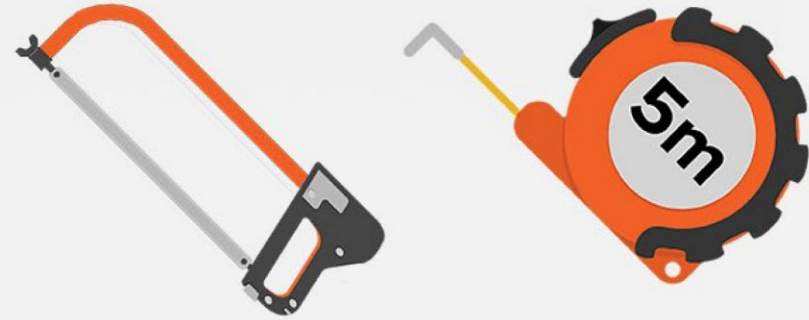
# 5. DIG POST HOLES

**DIG 2 x POST HOLES  
MINIMUM 500MM  
BELOW GROUND LEVEL**



## 6. CUT POSTS TO LENGTH

**GATE HEIGHT  
+ 100MM FROM  
GROUND LEVEL**

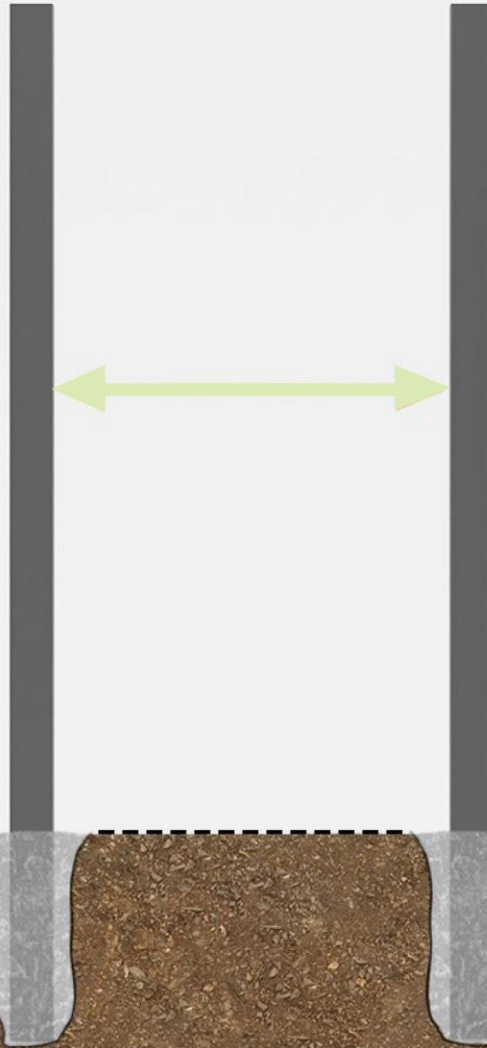


## 7. CONCRETE POSTS

**SET WIDTH BETWEEN POSTS  
GATE WIDTH + 30MM**

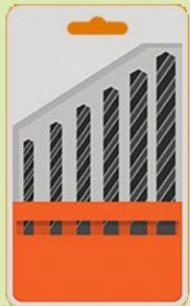
**USE QUICKSET CONCRETE**

**ENSURE POSTS ARE  
SQUARE IN BOTH AXIS**



# NOTES

BRACKET TO POST  
40MM MIN  
60MM MAX  
DRILL 2 X PLACES  
10MM DRILL



## 8. FLOOR SPIGGOT

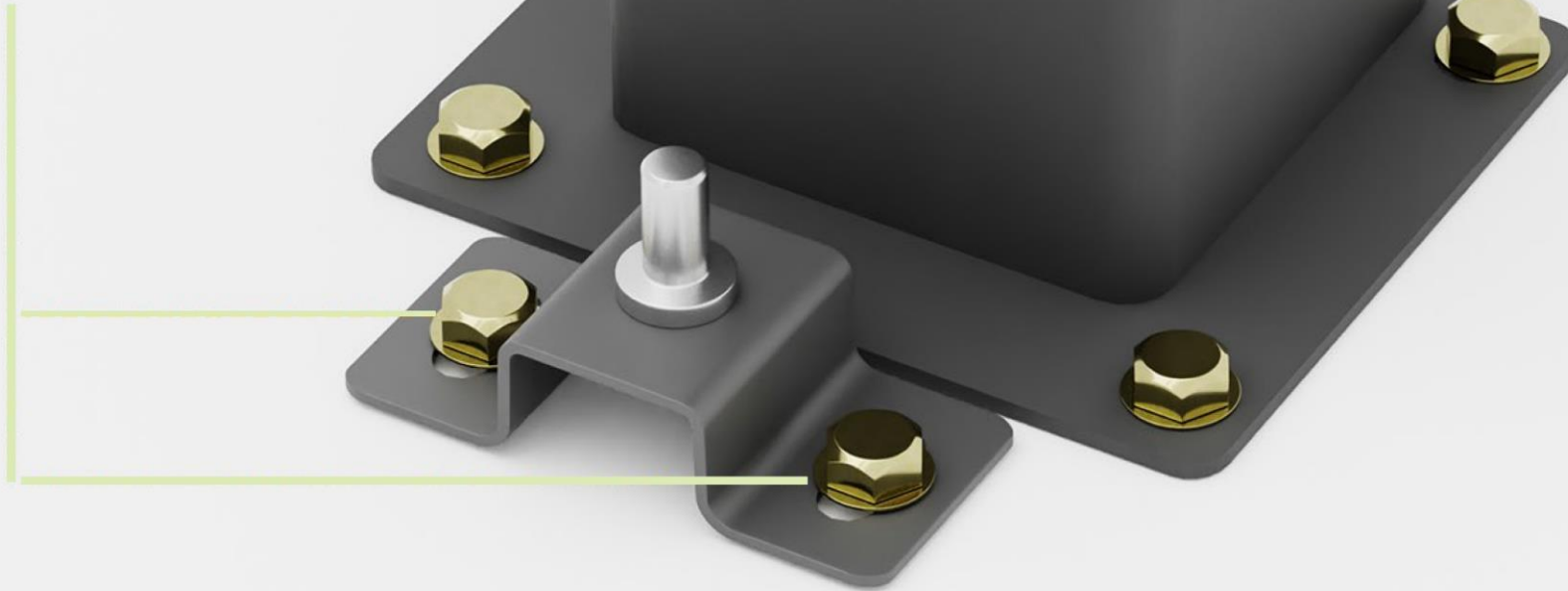






## 9. PRE-ASSEMBLE LOWER SPIGGOT

**M10 BOLTS  
2 x PLACES**



**10. FIX LOWER HINGE TO FLOOR**

# 11. ASSEMBLE UPPER SPIGGOT

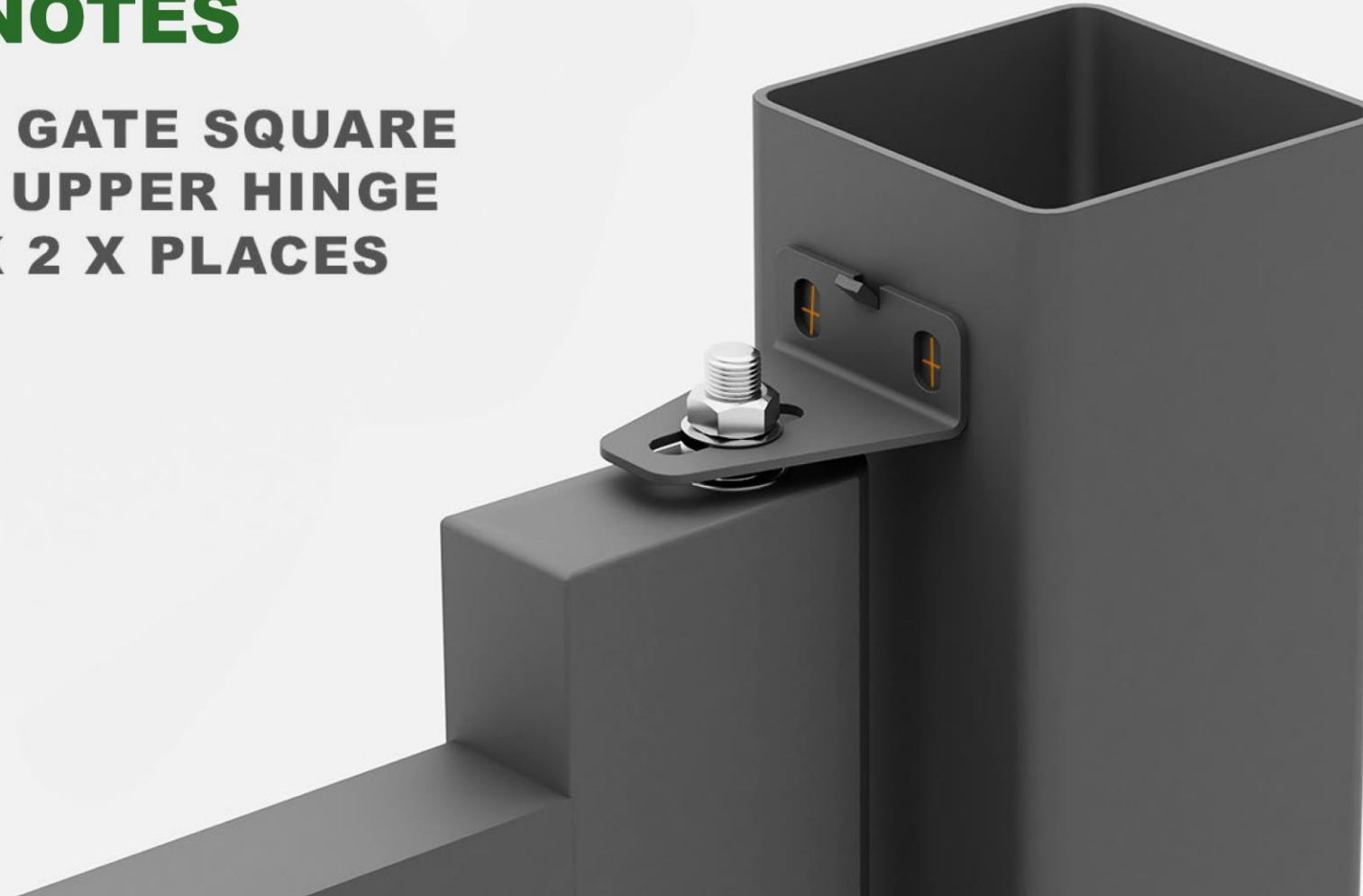


**NOTES**

**OPPOSITE TO LOWER BRACKET**

## NOTES

- HOLD GATE SQUARE
- LOAD UPPER HINGE
- MARK 2 X PLACES



**12. MARK UPPER HINGE POSITION**

## NOTES

**DRILL 2 X PLACES  
12MM DRILL**



**13. DRILL POST**

## NOTES

- 2 x M12 x 35MM
- 2 x M12 NUTS
- 4 x WASHERS

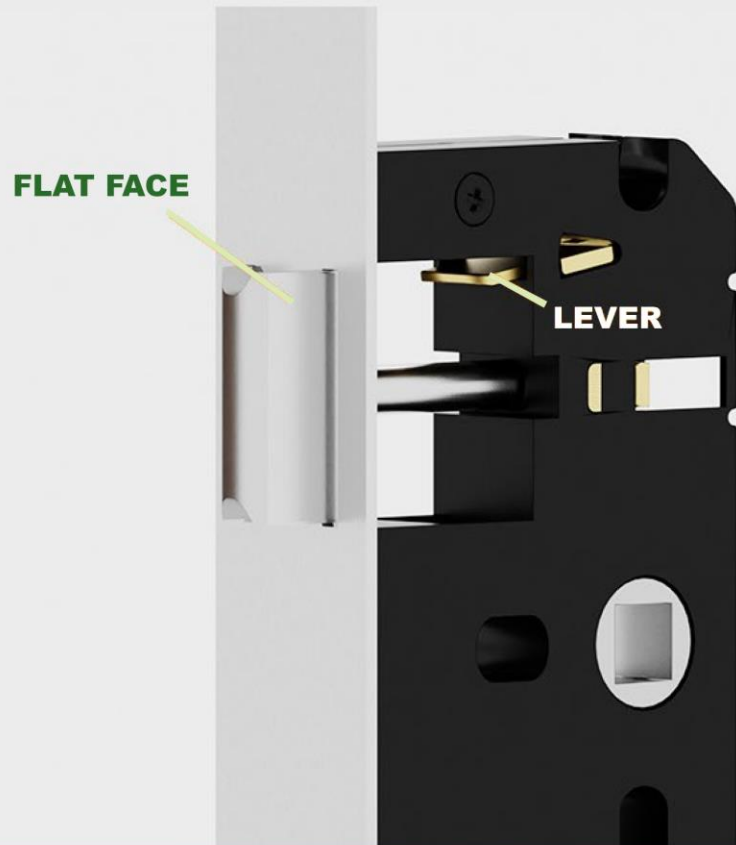


**14. FIX UPPER HINGE**

## 15. LOCK ASSEMBLY



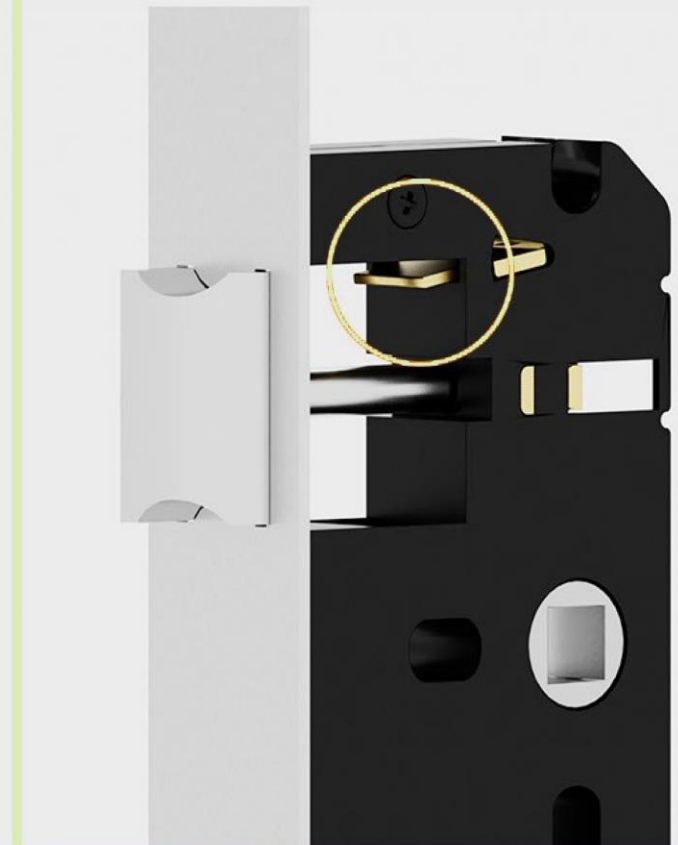
# 16. SET LATCH DIRECTION



SET FLAT FACE TOWARDS  
INSIDE OF GATE DIRECTION



TO CHANGE DIRECTION OF  
LATCH LIFT LEVER, DEPRESS  
LATCH AND ROTATE 180  
INSIDE OF GATE DIRECTION



ONCE SET ENSURE LEVER  
FALLS BACK TO HOME POSITION



# 17. HANDLE ASSEMBLY



**M4 X 25MM  
2 PLACES**



**INSERT LOCK  
INSERT SPINDLE**



**M4 X 45MM  
2 PLACES**

## 18. HANDLE



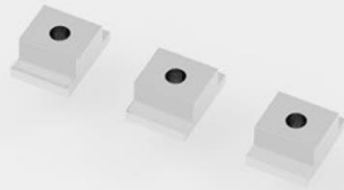
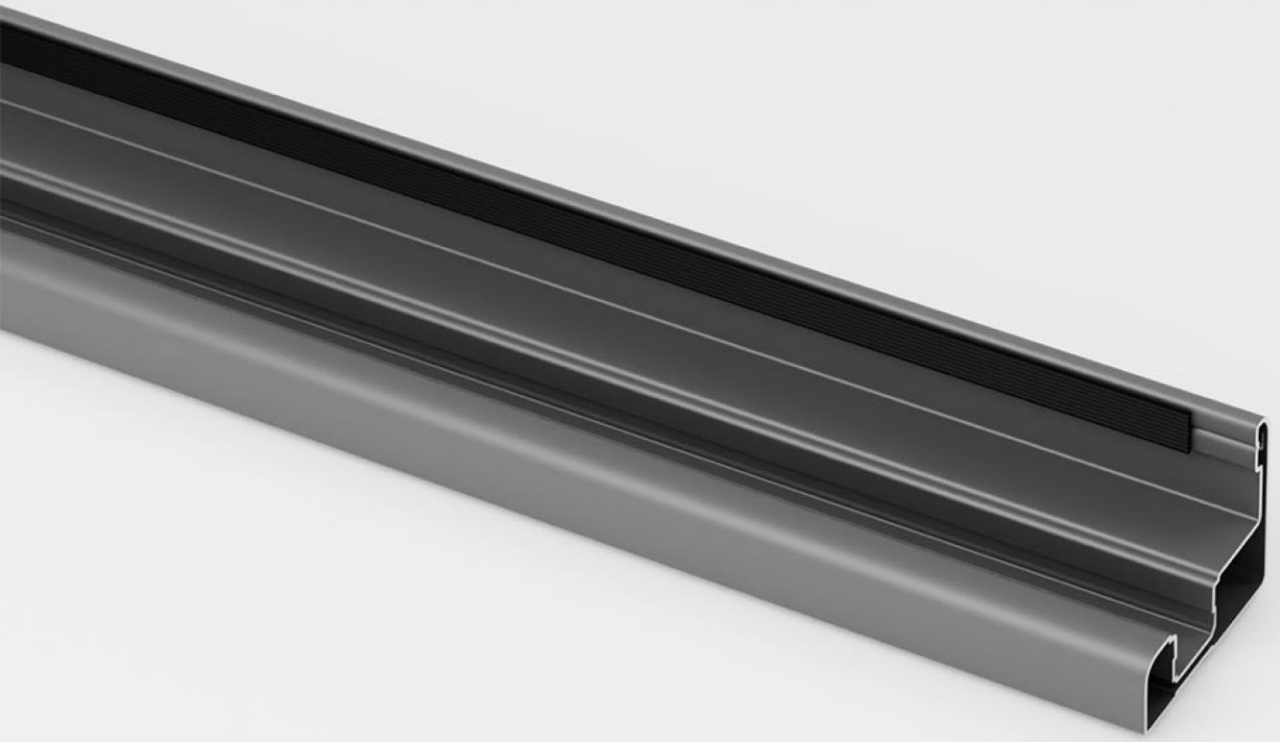
**SET LH / RH HANDLE ENSURE FIXING HOLES TO INSIDE OF GATE**

# 19. HANDLE



**M4 X 60MM  
2 PLACES**

## 20. LOCK KEEP



**LOAD 3 X SCREW BLOCKS**

## 21. LOCK KEEP

- **SET TO APPROXIMATE CENTRE OF RAIL**

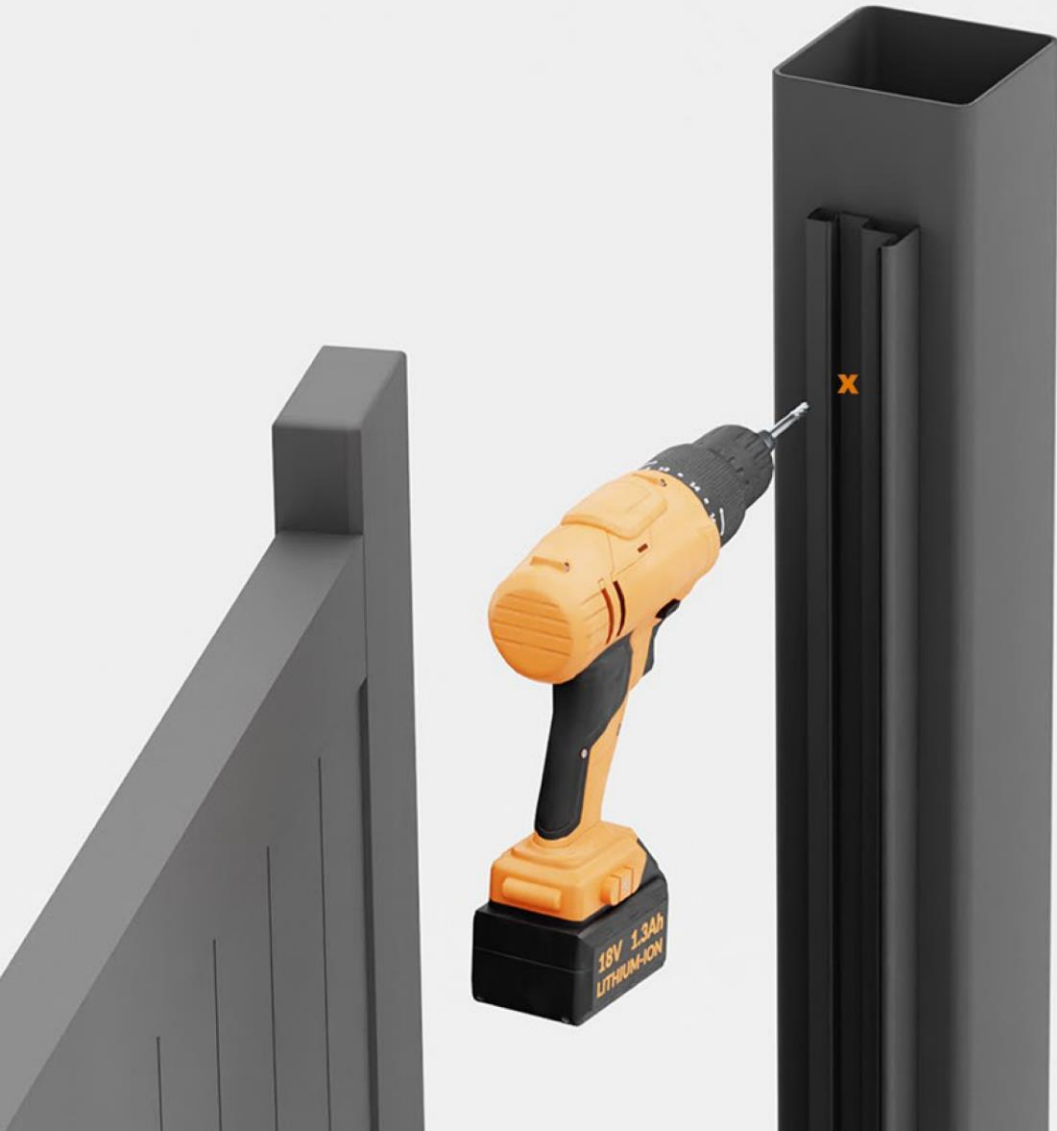


## 22. LOCK PLATE

**M4 X 25MM**  
**3 X PLACES**

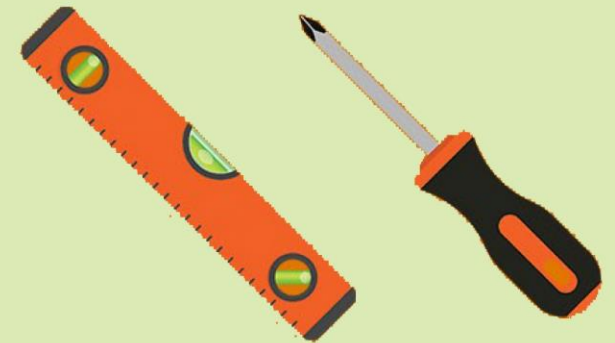


## 23. FIT LOCK KEEP



## NOTES

**ENSURE SQUARE  
DRILL 3MM PILOT - 3 X PLACES  
TOP / MIDDLE / BOTTOM  
M6 X SELF TAPPING SCREWS**



**24. ADJUST LOCK KEEP**

**SET HEIGHT TO LATCH**







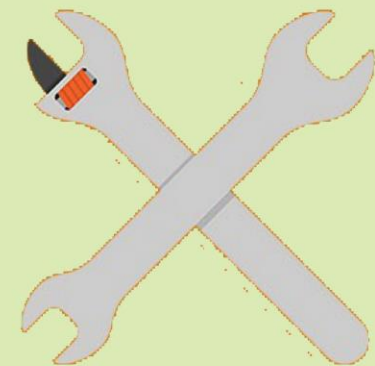
**25. CUT COVER PLATE TO LENGTH - 2 X PLACES**

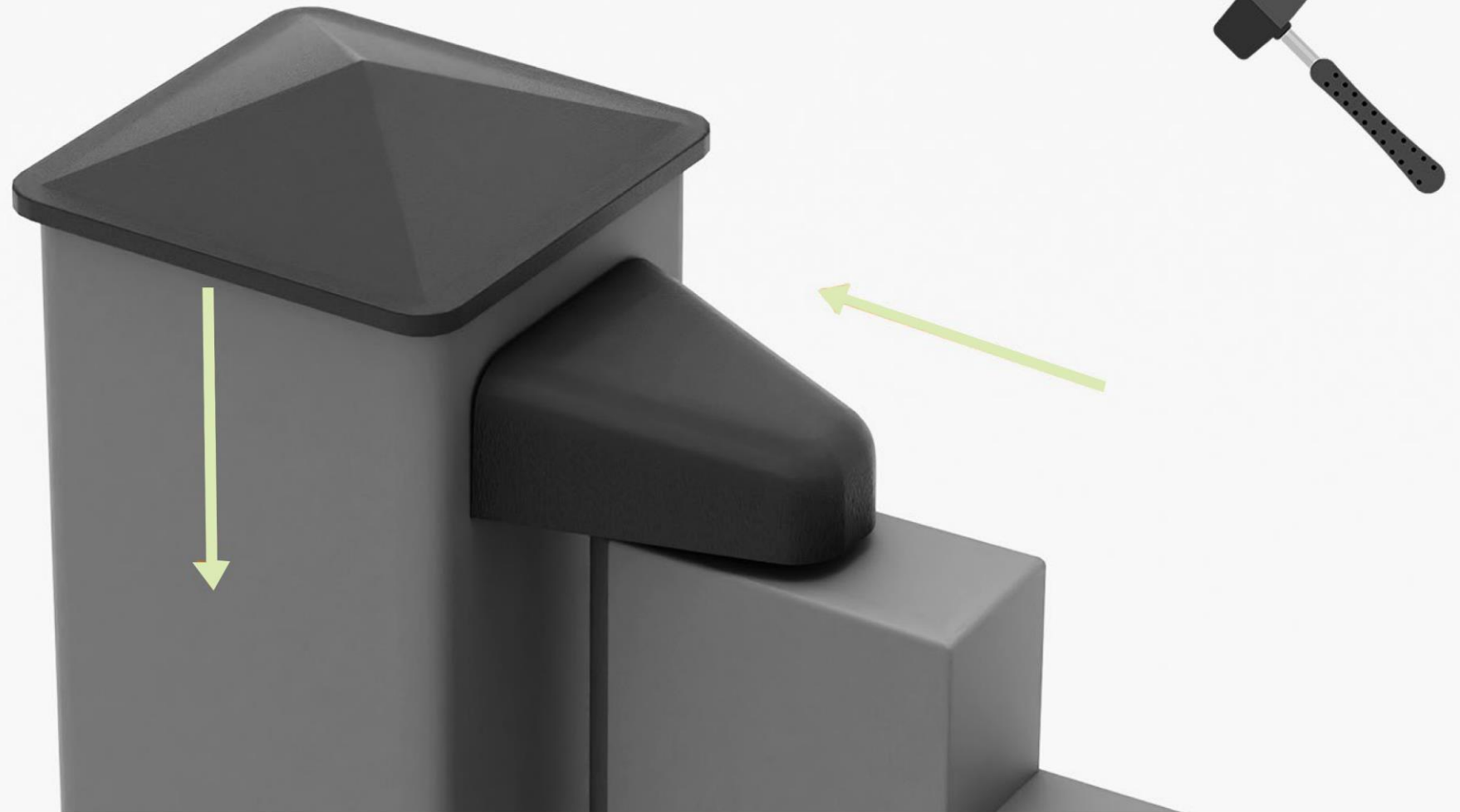


## 26. FINAL ADJUSTMENTS

### NOTES

**SLACKEN BOLTS  
ADJUST TO LATCH**





**27. FIT WEATHER CAPS X 3**

# PROJECT COMPLETE

