



SUPERIOR RANGE USER MANUAL



This Superior Range assembly manual will show you how to assemble your own Superior Range fencing.

Before beginning the assembly, make sure that there is ample room for installing and assembling your product.

IMPORTANT:

Customers must notify eComposite Products within 5 working days if a delivery has any shortages or damaged items - Notification must be made in writing to sales@ecompositeproducts.co.uk

www.ecompositeproducts.co.uk

sales@ecompositeproducts.co.uk

0800 599 9667

PARTS & TOOLS CHECKLIST

Ensure you have the following parts included as these are crucial components that will be the main frame of your entire assembly.



Rubber Mallet



Tape Measure



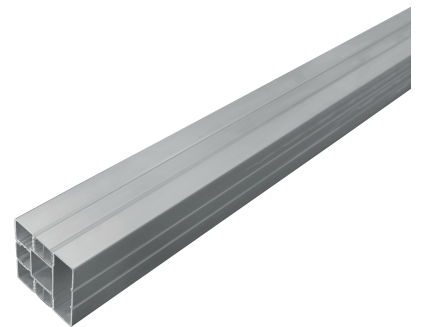
Spirit Level



Shovel



Hack Saw



Aluminium Post
QTY: 1 & 1 End Post



Top & Bottom Rail (Sold as a set)
QTY: 1 per post



WPC Panel
QTY:

6ft - 9 Boards
5ft - 7 Boards
4ft - 6 Boards
1m - 5 Boards



Aluminium Cover Strip
QTY: 1 set per post



Post Cap
QTY: 1 per post



Spacer
QTY: 2 per post

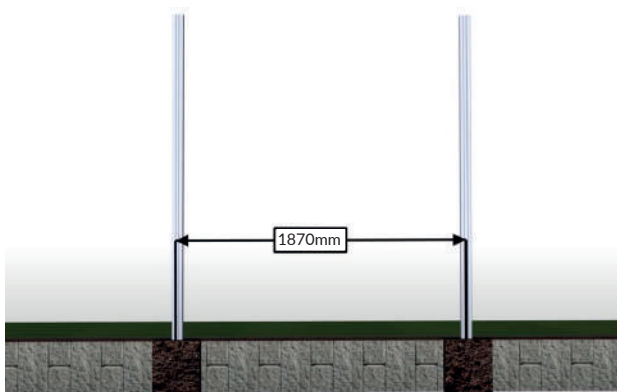
INSTRUCTIONS

Before installing, eComposite Products advise you to check your products recieved are correct to the products ordered.

Please note;

1m and 4ft kits are supplied with 1.9m posts unless purchased otherwise.

5ft and 6ft kits are supplied with 2.4m post unless purchased or advised otherwise.



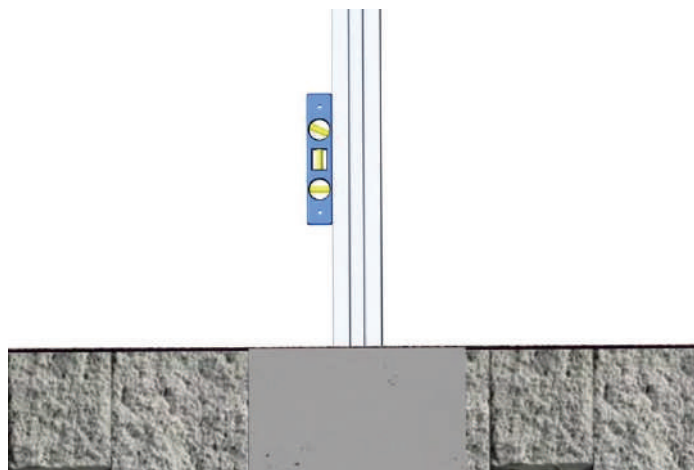
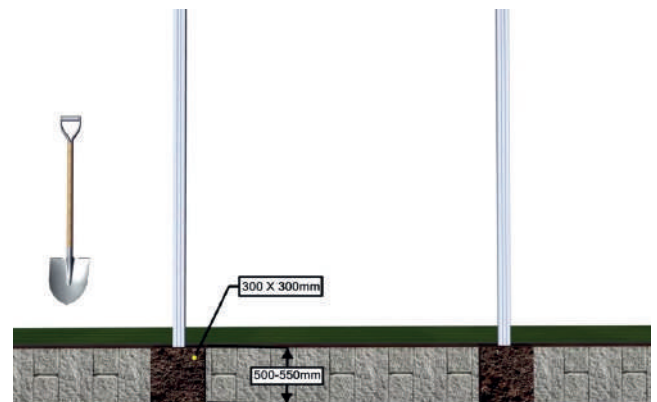
Place two posts into the desired location.

Begin step one by placing two aluminium posts at a distance of **1870mm** from the centre of the first post to the centre of the second.

Mark the locations of the posts.

Mark the location of the post using a shovel to dig two 300mm x 300mm x 500mm deep holes.

Insert both aluminium posts into the 500mm deep holes and make sure the posts stand 1900mm above ground level.



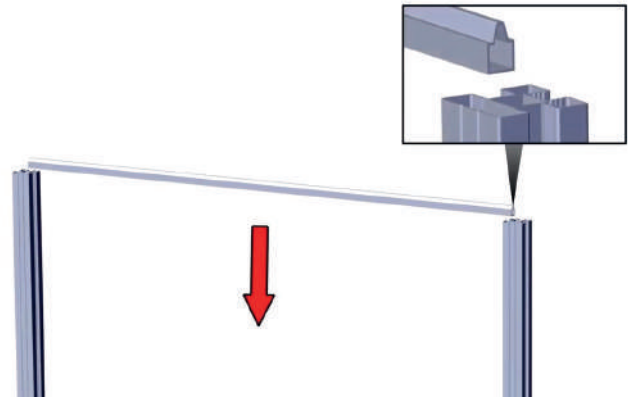
Fill the locations with concrete.

Once the placement of the posts and the depth of the holes are verified, fill the holes with concrete and use a spirit level to ensure the posts are level, front and side. Make sure both posts remain straight and parallel to one another.

Insert the bottom rail.

Begin by placing the aluminium bottom rail between the two aluminium posts with the flat side facing down.

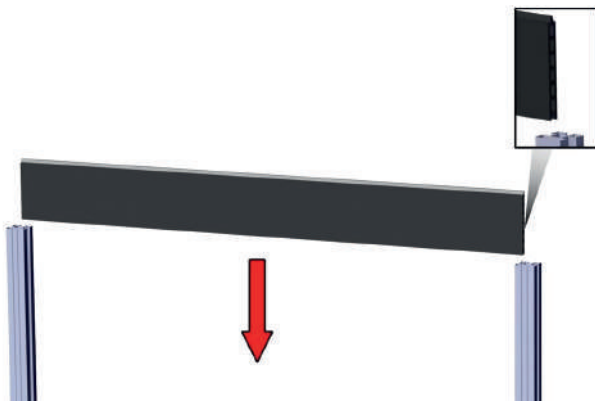
Slide the rail all the way to the floor and make sure it lays flat on the ground and is secure.



Line up the WPC Panel.

Begin this next step by placing one WPC panel between the two aluminium posts. The notched section of the panel goes face down while the extruded side goes face up.

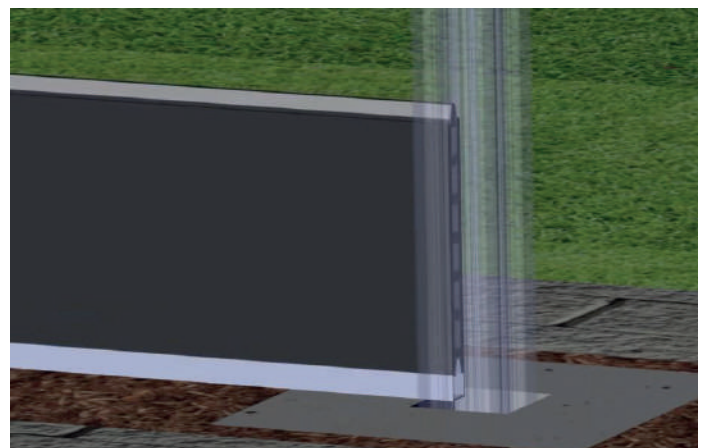
Before pushing the panel down, ensure that there is a gap of **5-6mm** worth from the sides for expansion.



Slide the panel downward.

Slide the panel all the way to the bottom, ensuring the notched part of the panel slides into the bottom aluminium rail and locks into place.

Repeat these steps for the remaining WPC panels.



Line up the top rail.

Begin the next step by placing the aluminium top rail between the two aluminium posts on top of the top board.

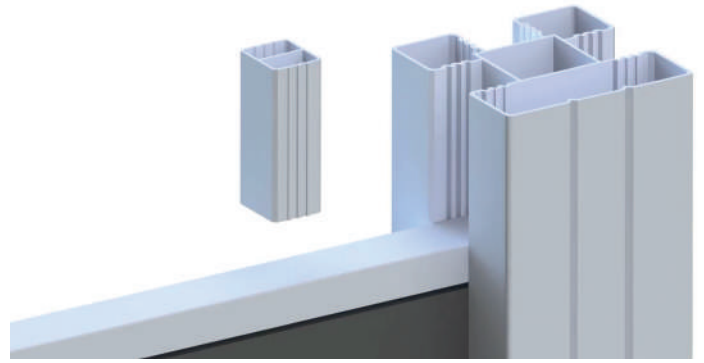
Ensure the notched face is pointing down and the flat surface is face up.



Line up the spacers.

Place two aluminium spacers on top of the top rail, situated at the top of the post. If the spacers are too tall, trim them with a hack saw.

If the posts aren't exactly 1900mm your spacer may be too short which you can cut and use the remainder of the cover strip.



Repeat the process for multiple fences.

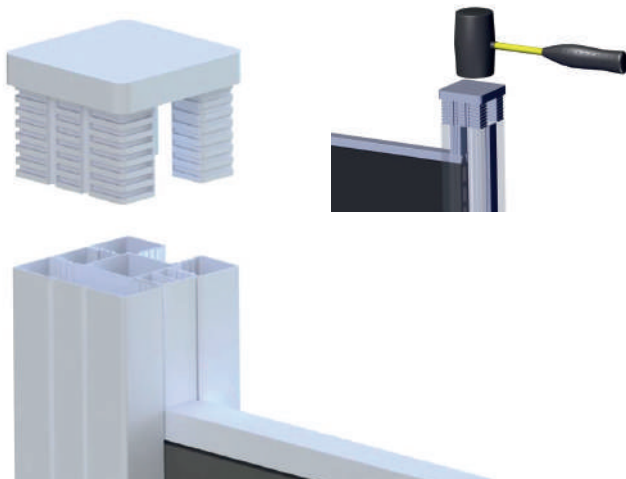
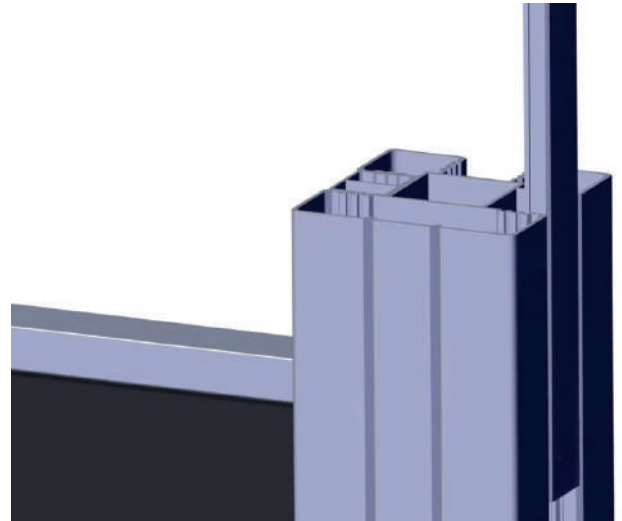
If you are installing multiple fences, repeat the same previous steps for each additional section. Add as many fence sections as you need to fit your desired parameter.

Ensure proper measurements and adequate spacing is applied to multiple fences.



Line up the strips.

The cover strips are optional and are used to cover the fence end and grooves that aren't used. Place the strip with the notched side facing inward and the flat side facing outward. If the cover strips are too long and stick out, you might have to trim them using a hacksaw.



Place the caps.

Begin the next step by placing a post cap on top of each of the aluminium posts. Slightly slide the cap into the post and gently tap them into place using a rubber mallet. Repeat this for each aluminium post installed.



Thank you for choosing eComposite Products!

We hope you love our product as much as we do and love the outcome of your fencing for your project!

We would love to see some final photographs of your projects. If you would like to send us some images, please contact;

sales@ecompositeproducts.co.uk

We would also really appreciate a Google or Facebook review with your thoughts and experiences working with us here at eComposite Products.

Thank you!